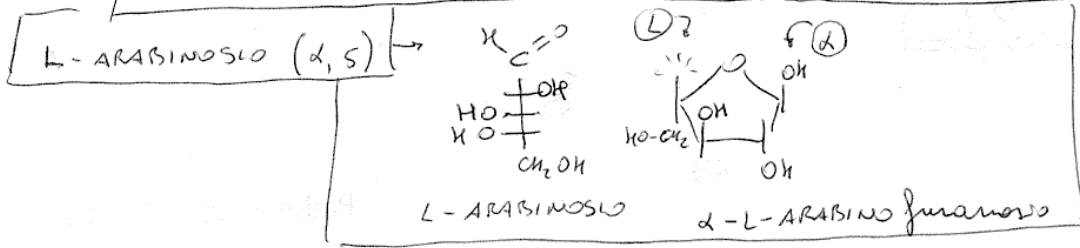
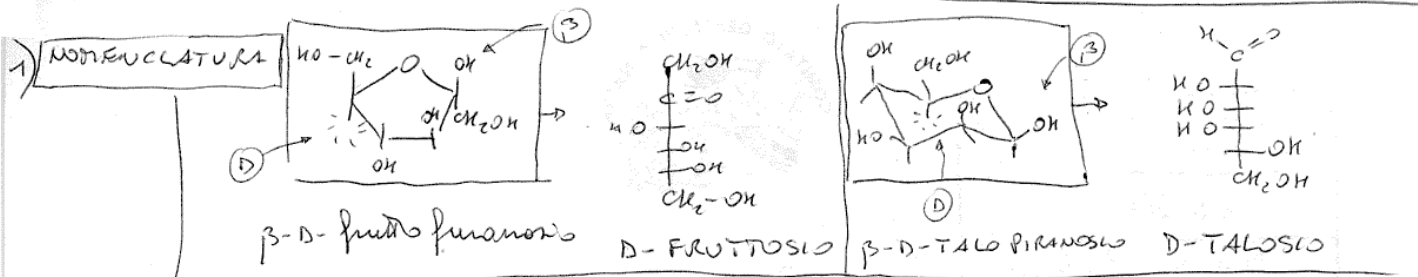
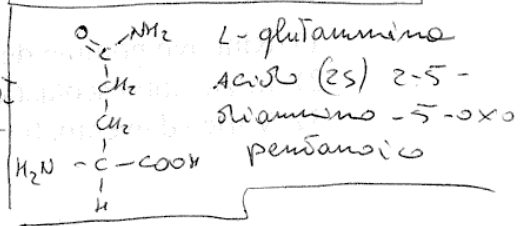
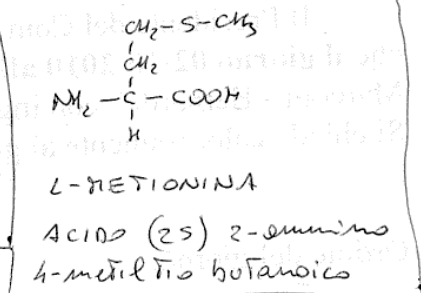
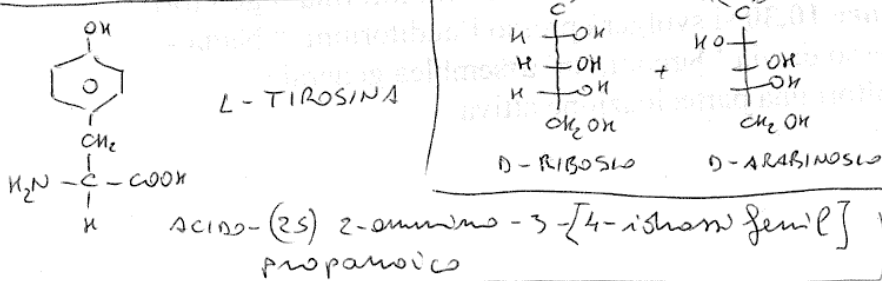
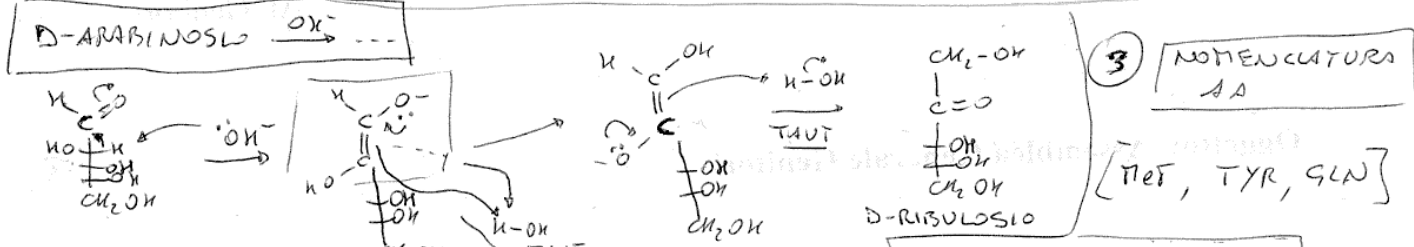


# COMPITO DI RIPASSO DI CH. ORGANICA VCh 21-10-2010

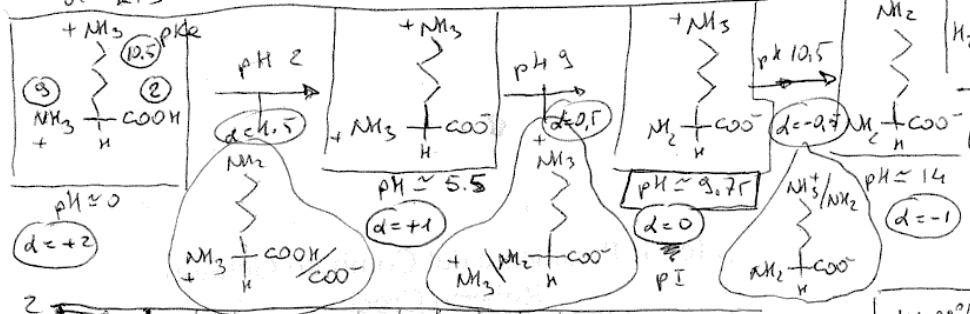


2) ISOMERIZZAZIONE ALCALINA

In ambiente basico i monosaccaridi isomerizzano attraverso la Tautomeria chetolica e intermedie enedioli. Si forma una miscela d'equilibrio del chetoso e dei due aldosi enomerici.



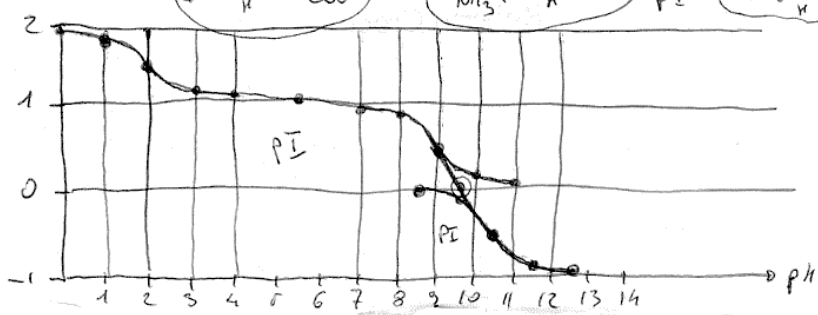
4) Scriv le forme acido-basi a vari pH, conica miste, pI, pK<sub>a</sub> di LYS



$$HA \rightarrow H^+ + A^-$$

$$K_a = \frac{H^+ A^-}{HA} \quad H^+ = K_a \frac{HA}{A^-}$$

$$pH = pK_a - \log \frac{HA}{A^-}$$



$HA = 99\% \quad \frac{HA}{A^-} = 100 \quad \log 100 = 2 \quad pH = pK_a - 2$   
 $HA = 90\% \quad \frac{HA}{A^-} = 10 \quad \log 10 = 1 \quad pH = pK_a - 1$   
 $HA = 50\% \quad \frac{HA}{A^-} = 1 \quad \log 1 = 0 \quad pH = pK_a$   
 $HA = 10\% \quad \frac{HA}{A^-} = \frac{1}{10} \quad \log \frac{1}{10} = -1 \quad pH = pK_a + 1$   
 $HA = 1\% \quad \frac{HA}{A^-} = \frac{1}{100} \quad \log \frac{1}{100} = -2 \quad pH = pK_a + 2$