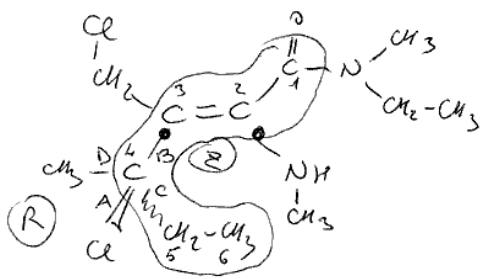


1) dare il nome IUPAC



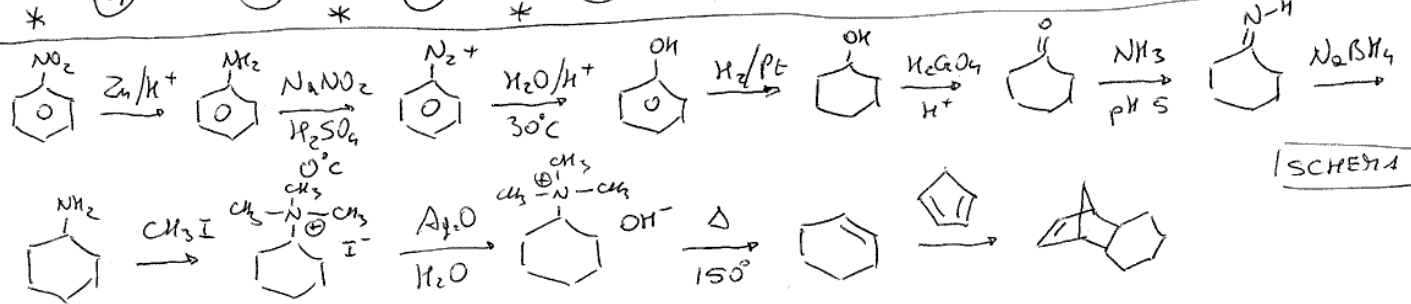
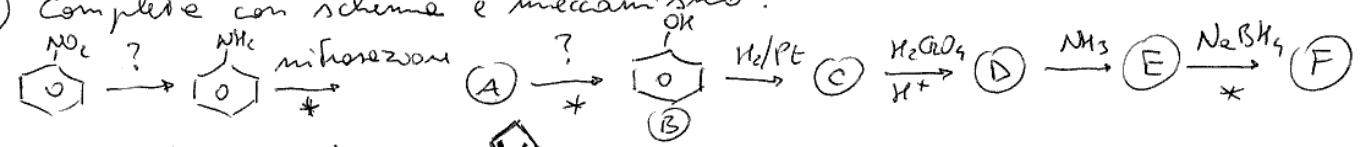
esano
 enammina
 es-2-enammina

N-metil
 N-etil
 2-[metilammina]
 3-[clorometil]
 4-metil
 4-cloro

m
 e
 m
 c
 m
 c

(2E, 4R)-4-cloro-3-[clorometil]-N-etil-4,N-dimetil-2-[metilammina]-
 es-2-enammina

2) Completare con scheme e meccanismo:



[SCHEMA]

MECCANISMO DELLE REAZIONI INDICATE

