

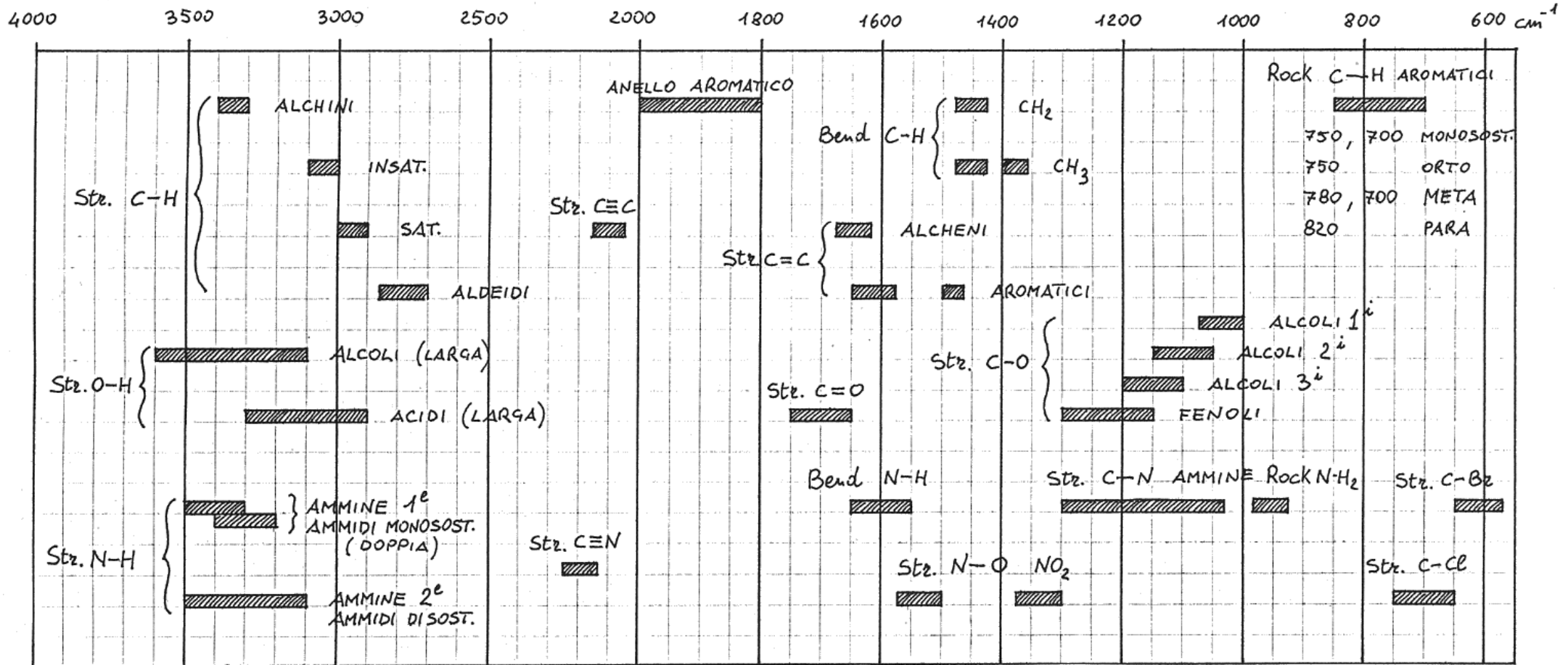
Laboratorio di chimica organica e biochimica  
Docente prof. Mauro Tonellato

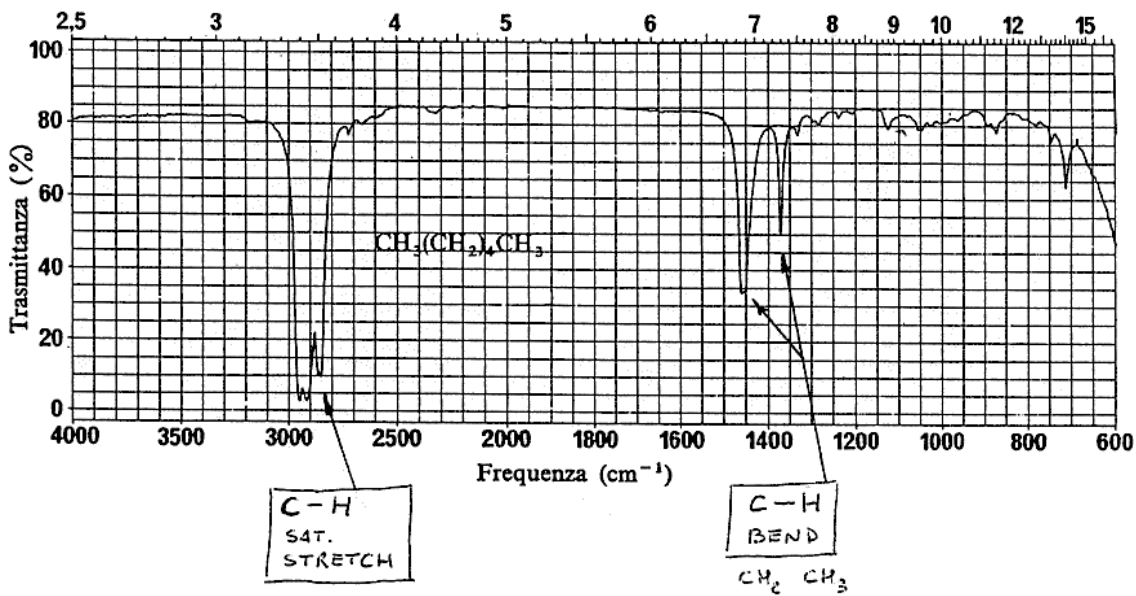
GUIDA ALLA  
INTERPRETAZIONE  
degli

SPETTRI

IR

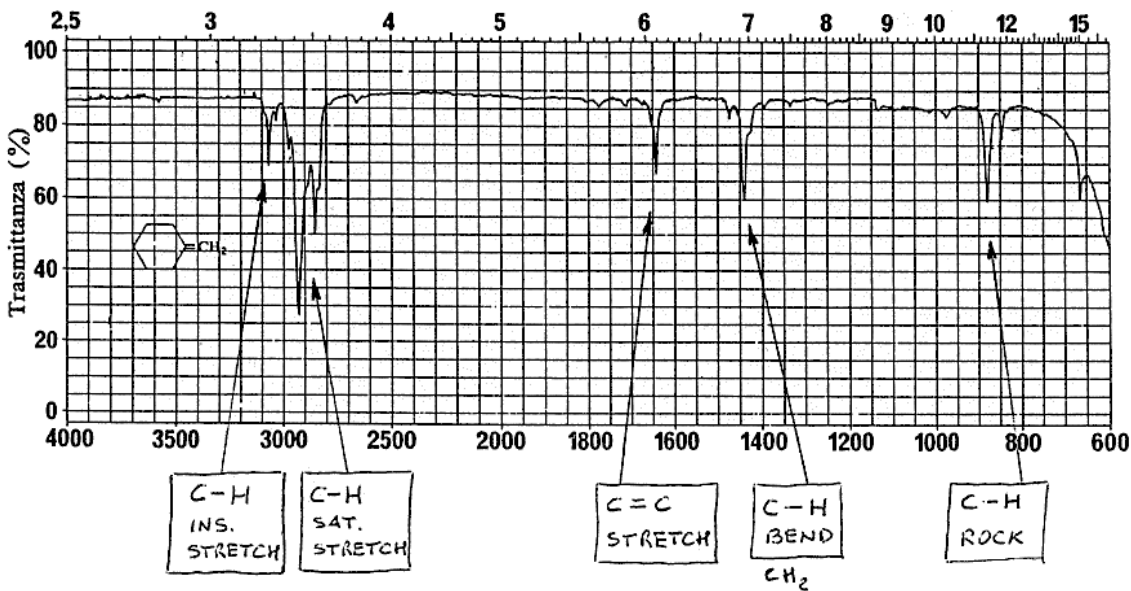
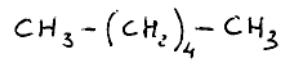
# Tabella degli assorbimenti IR





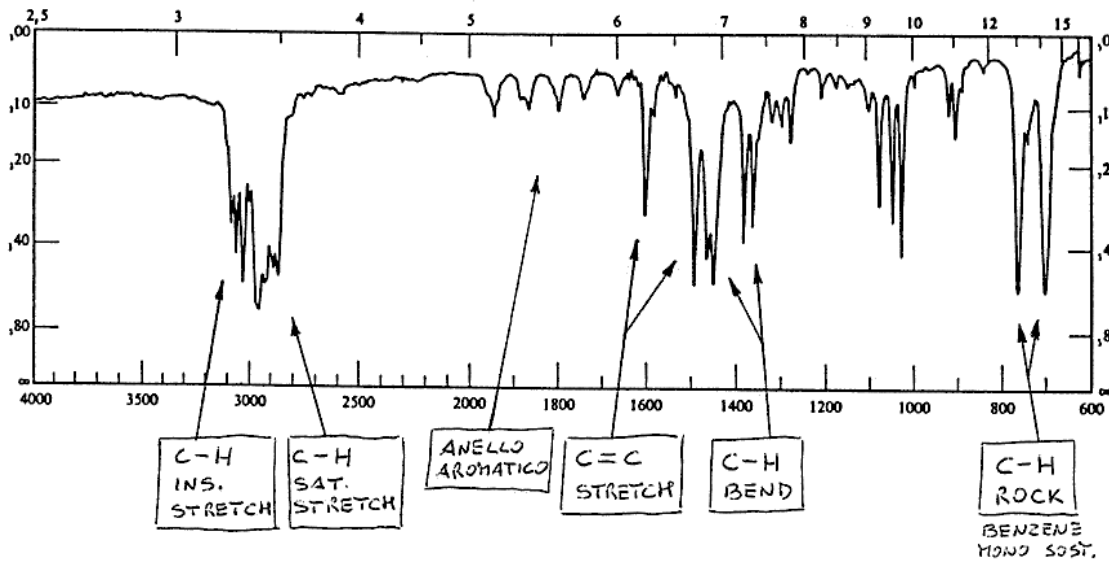
**ALCANI**

m-ESANO



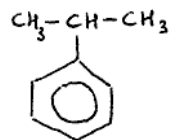
**ALCHENI**

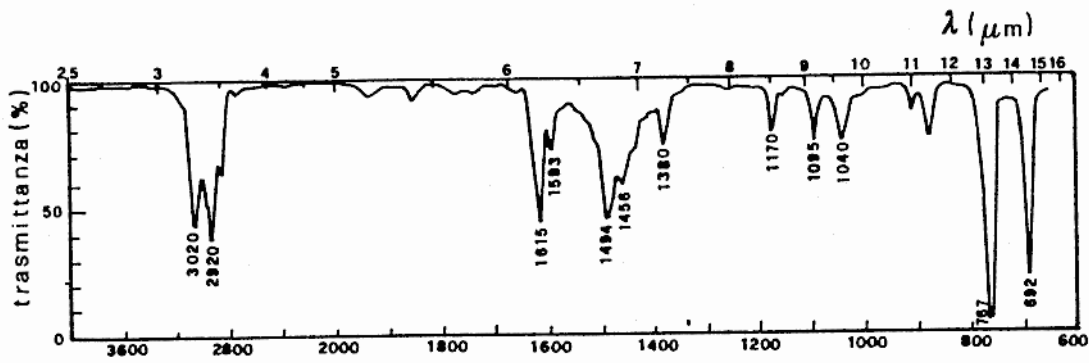
METILEN-CICLOESANO



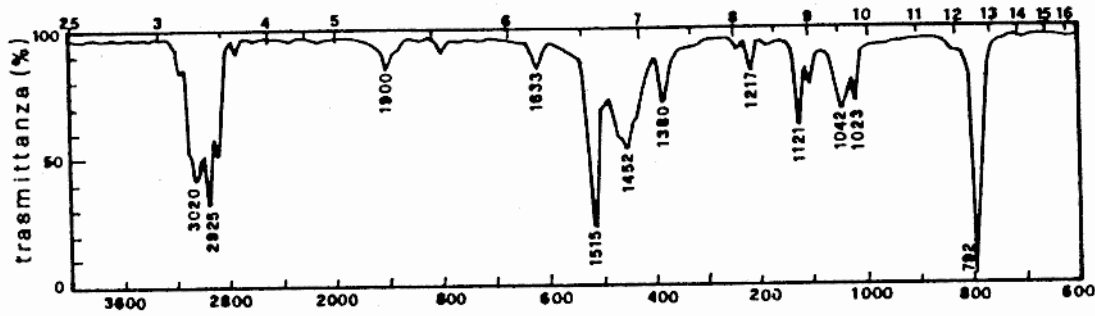
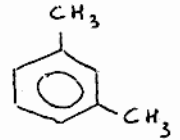
**AROMATICI**

ISOPROPIL BENZENE

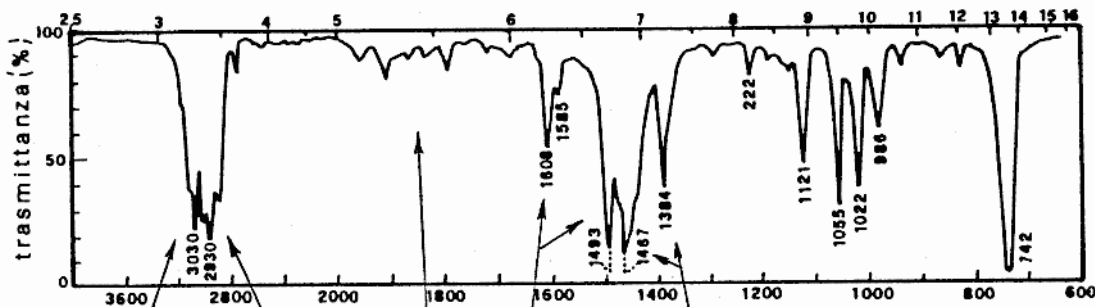
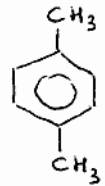




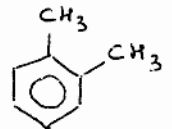
m-XILENE



p-XILENE



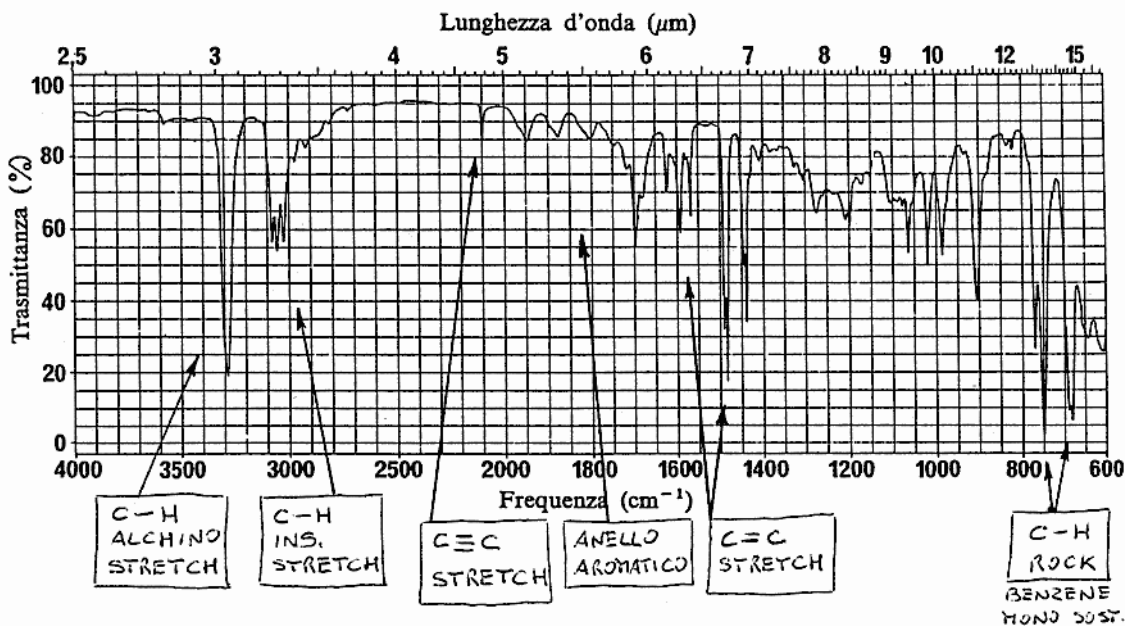
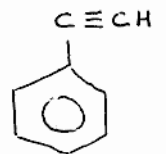
o-XILENE



C-H INS. STRETCH
C-H SAT. STRETCH
ANELLO AROMATICO
C=C STRETCH
C-H BEND
C-H ROCK

ALCHINI

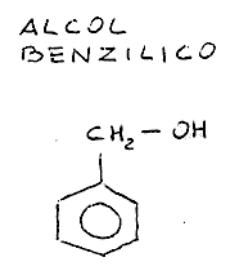
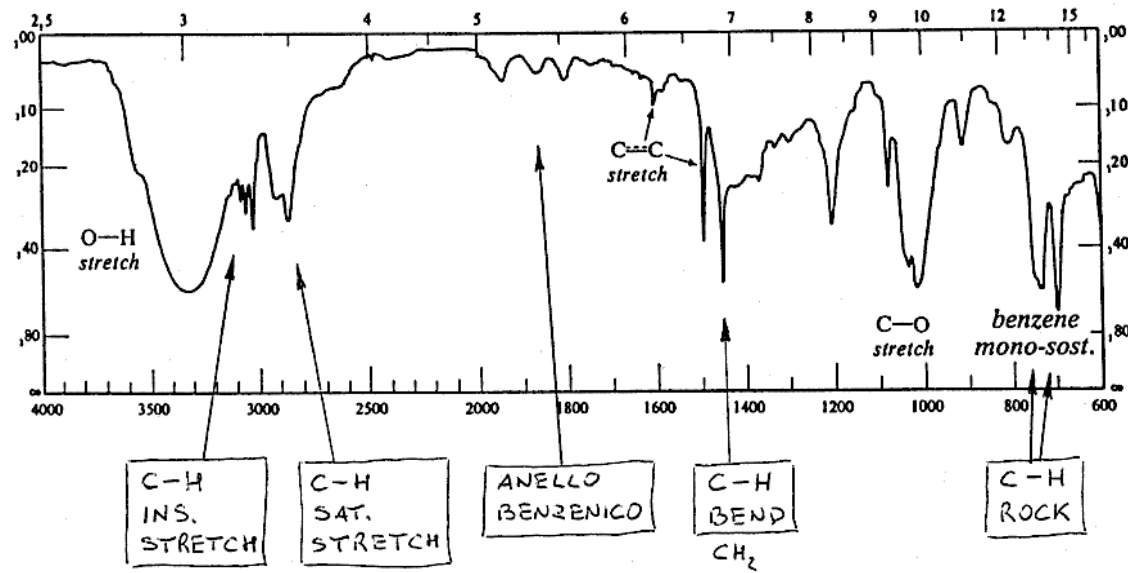
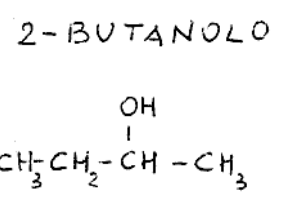
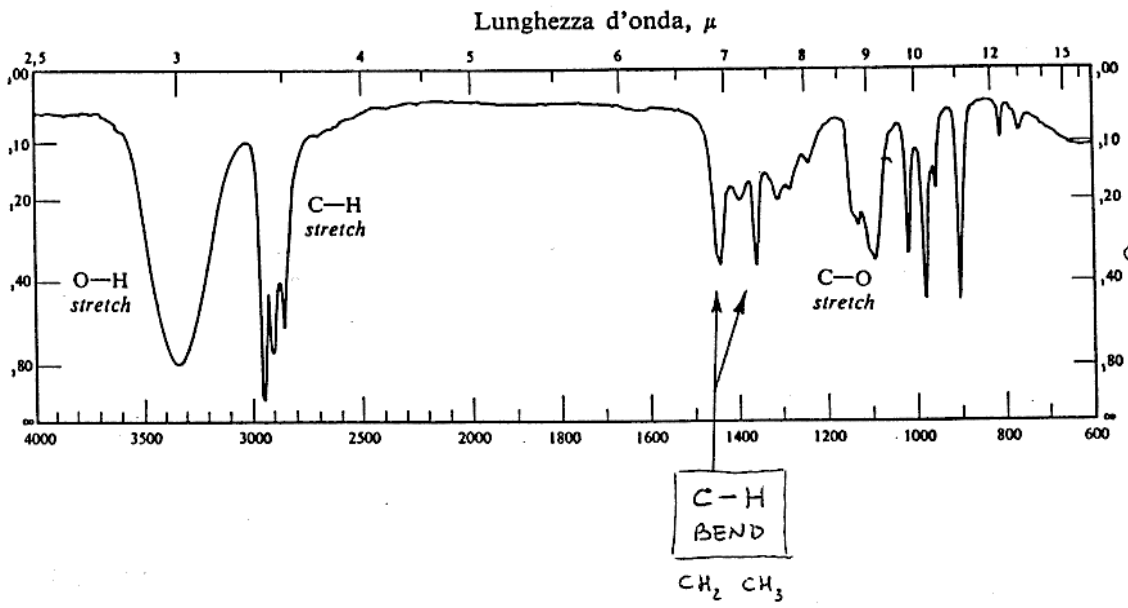
FENIL ACETILENE



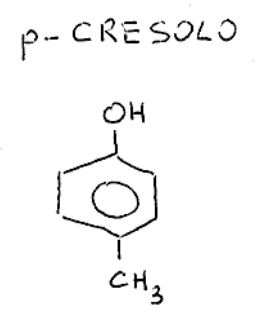
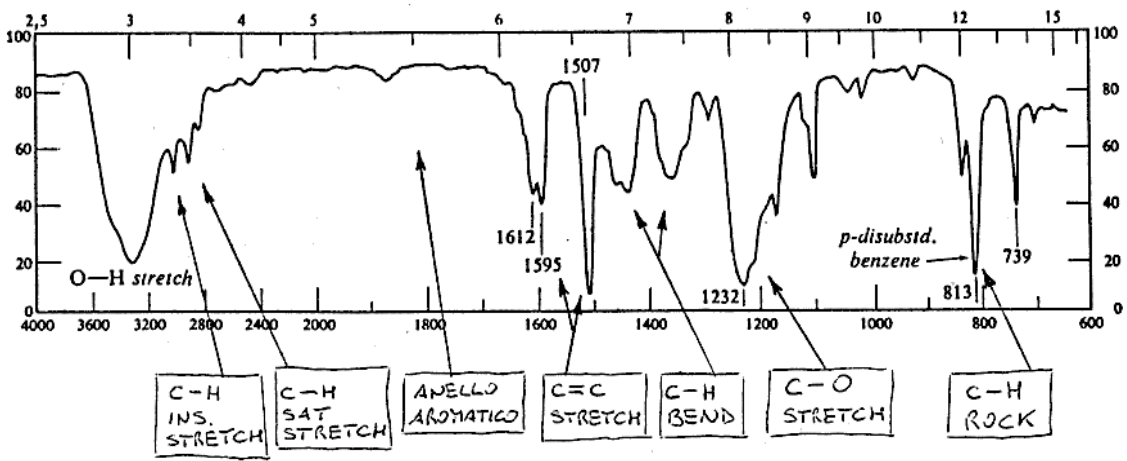
C-H ALCHINO STRETCH
C-H INS. STRETCH
C≡C STRETCH
ANELLO AROMATICO
C=C STRETCH
C-H ROCK

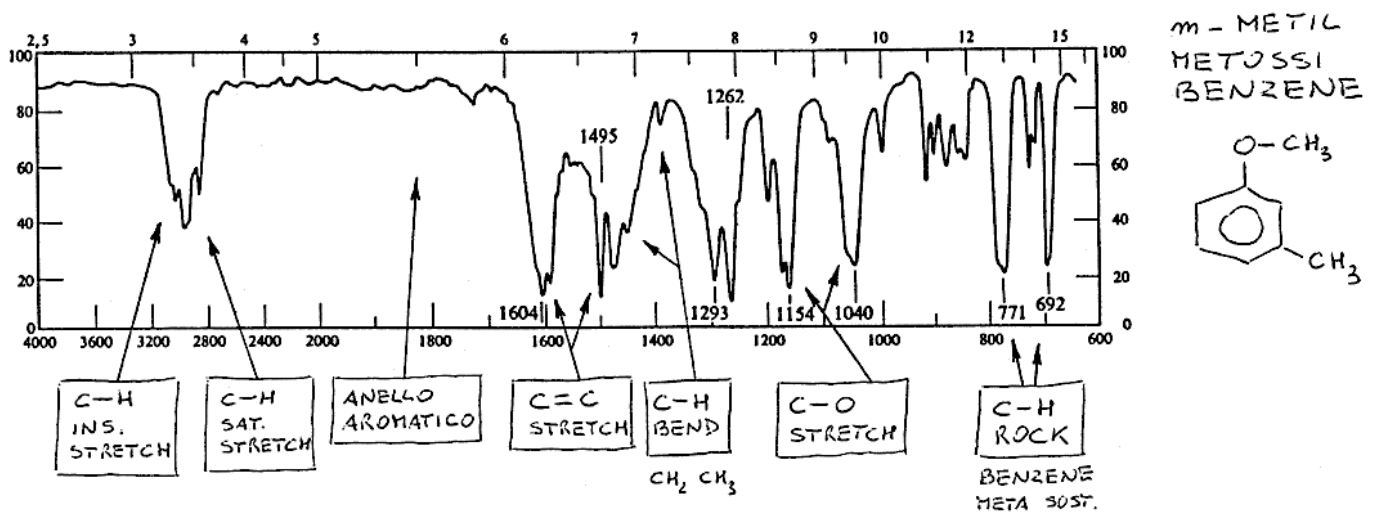
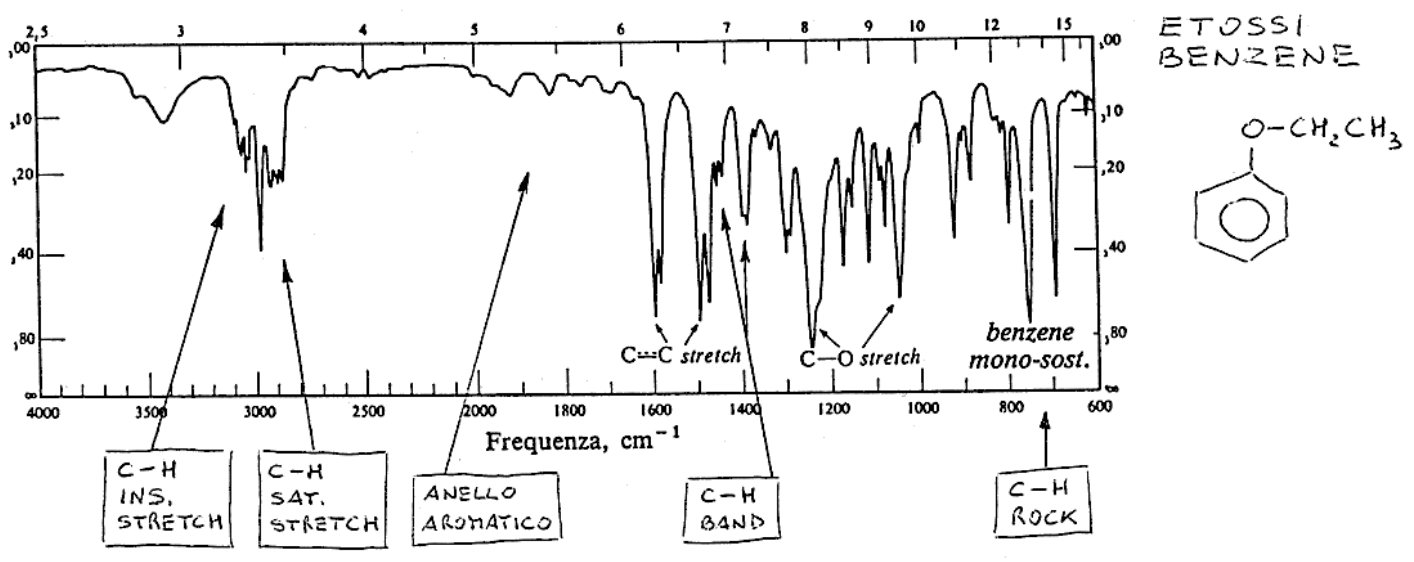
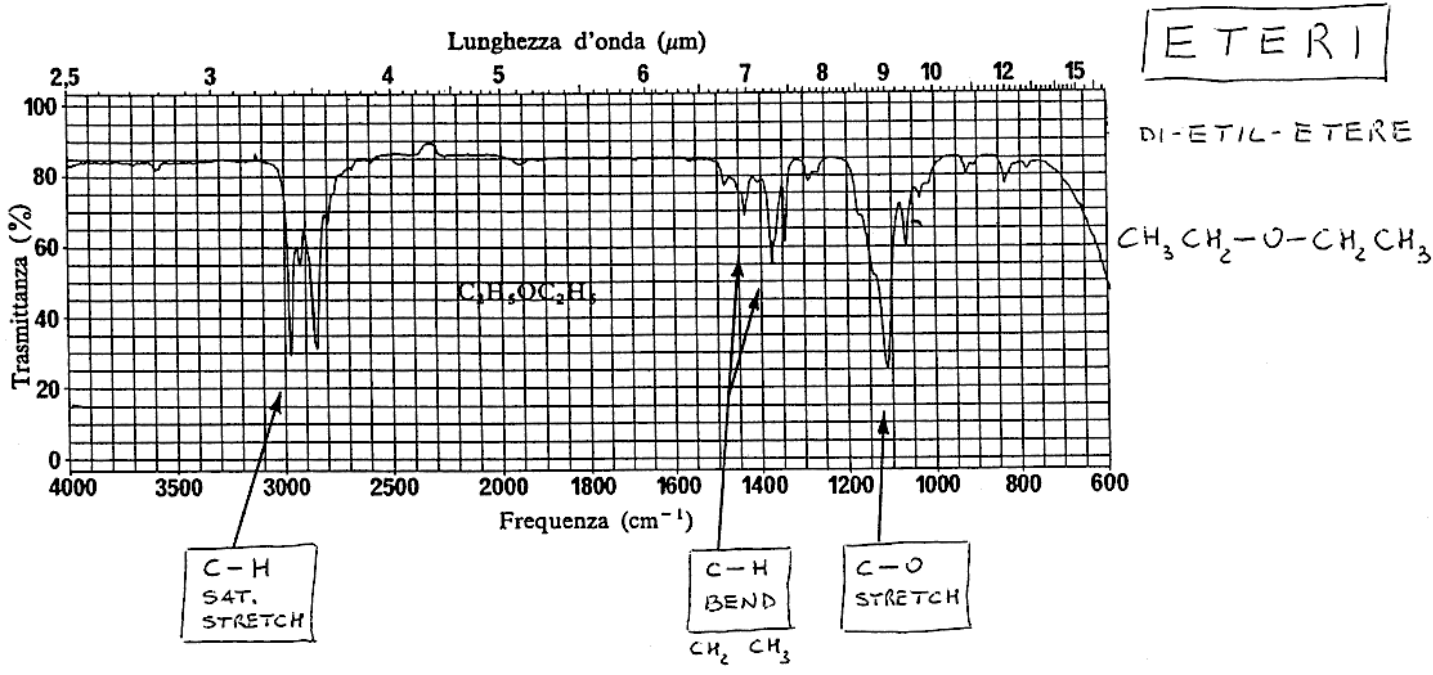
BENZENE HOND 5057.

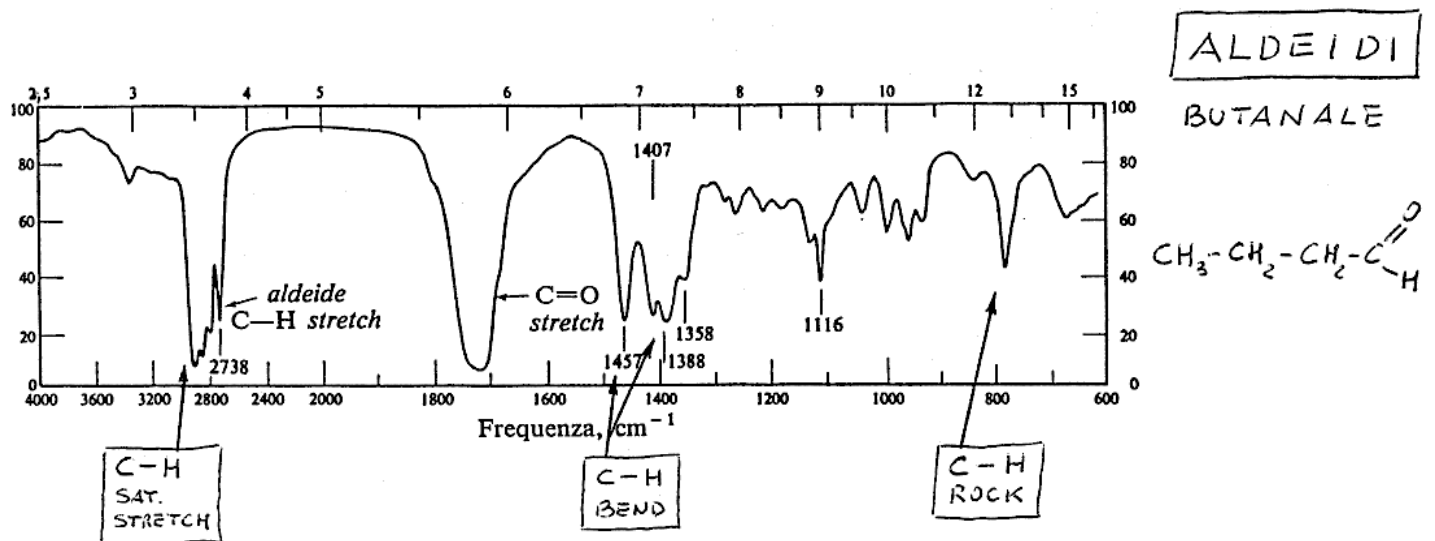
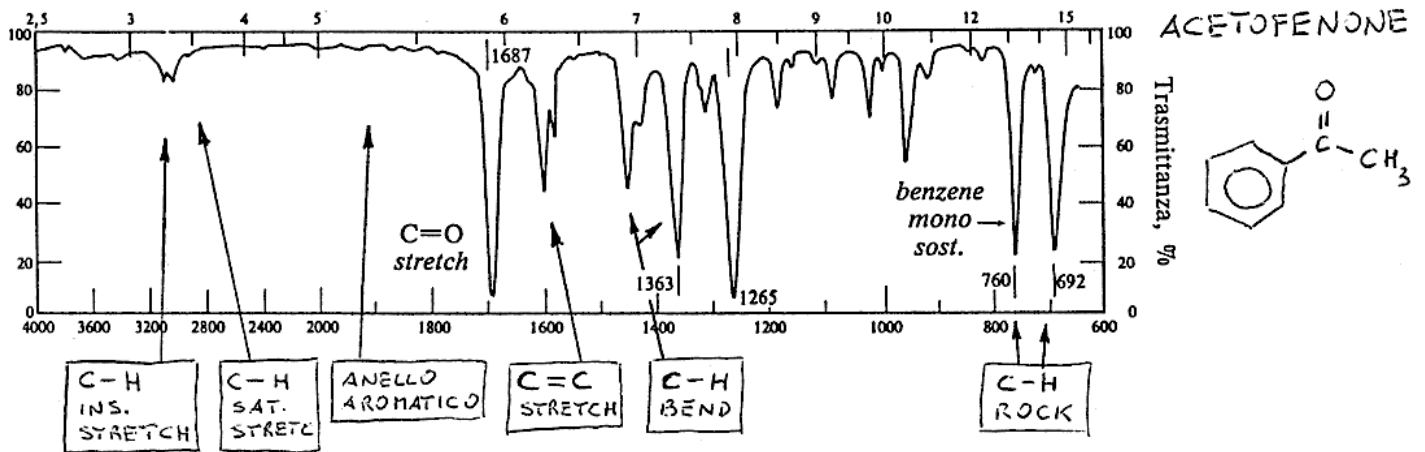
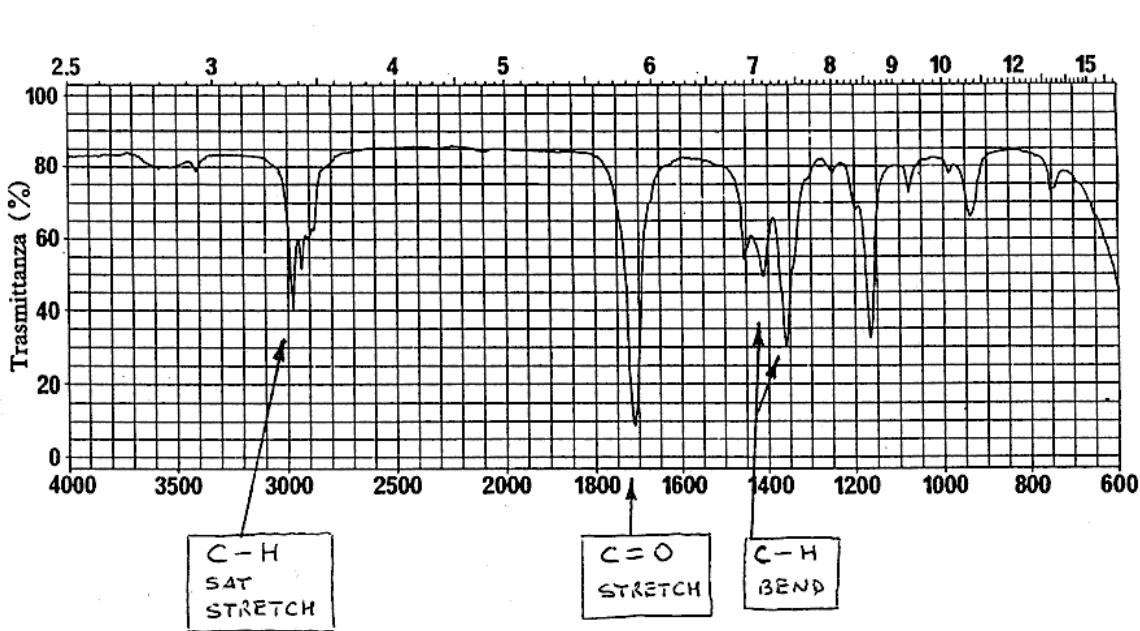
**ALCOLI**



**FENOLI**

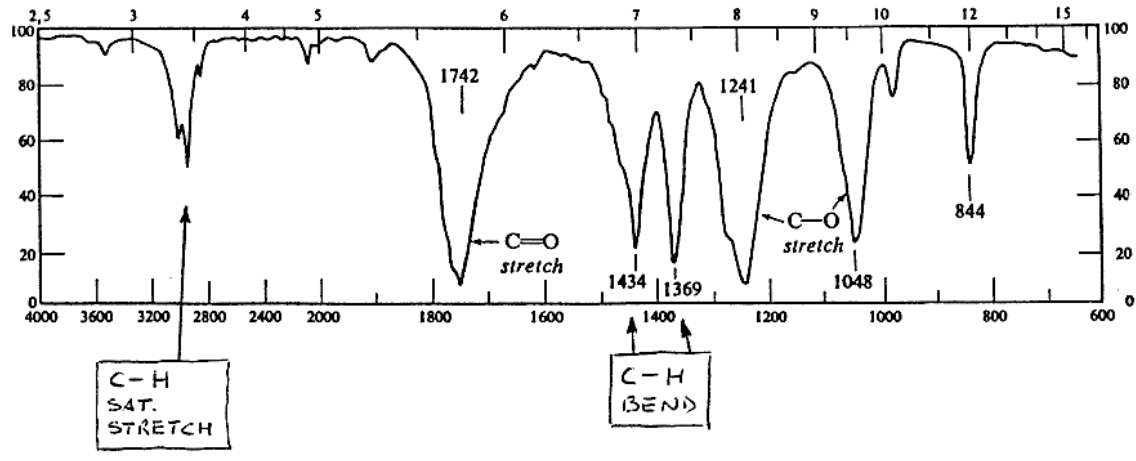
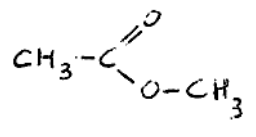






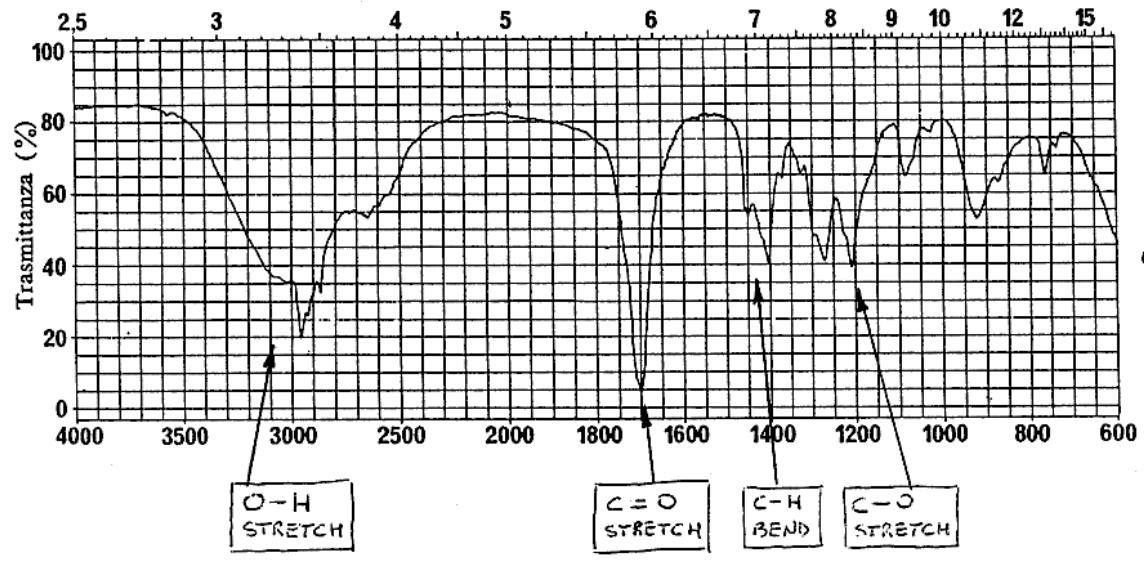
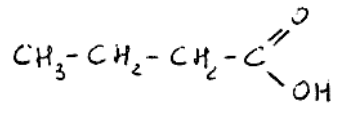
# ESTERI

ACETATO DI METILE

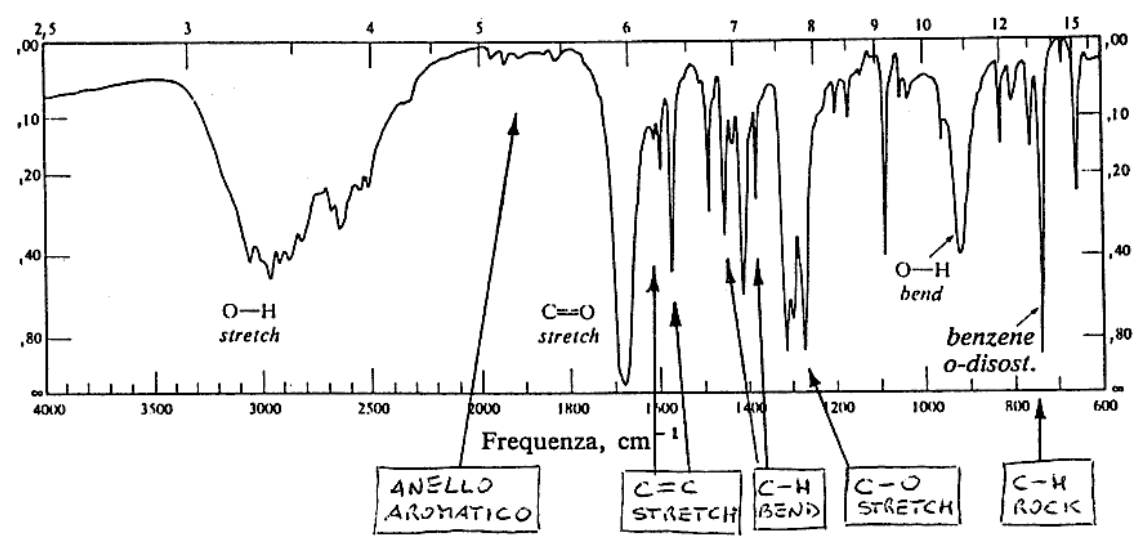
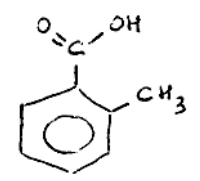


# ACIDI

ACIDO BUTIRICO



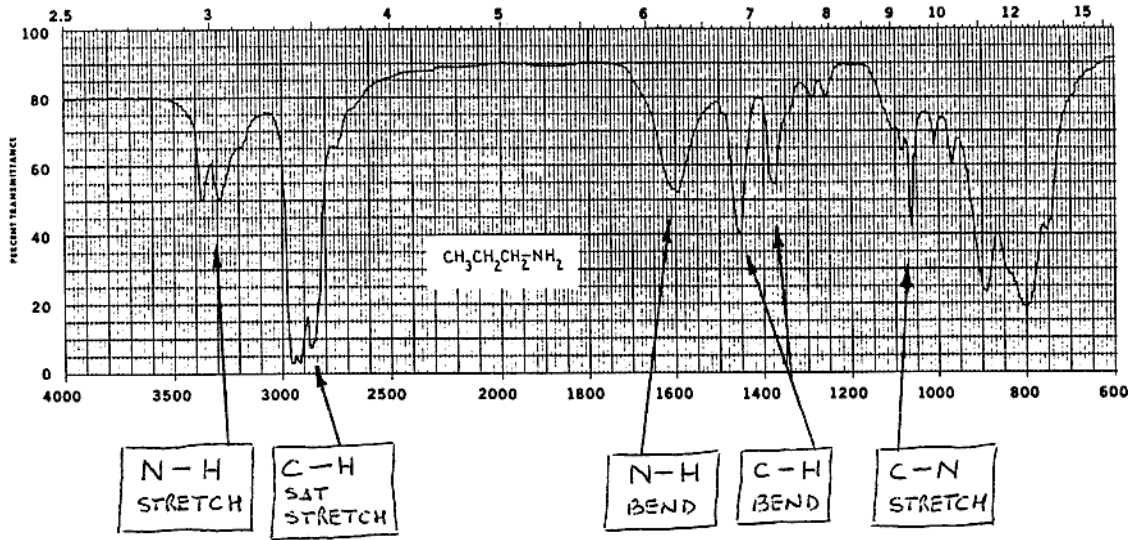
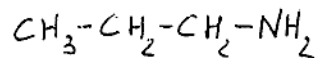
ACIDO O-METIL BENZOICO



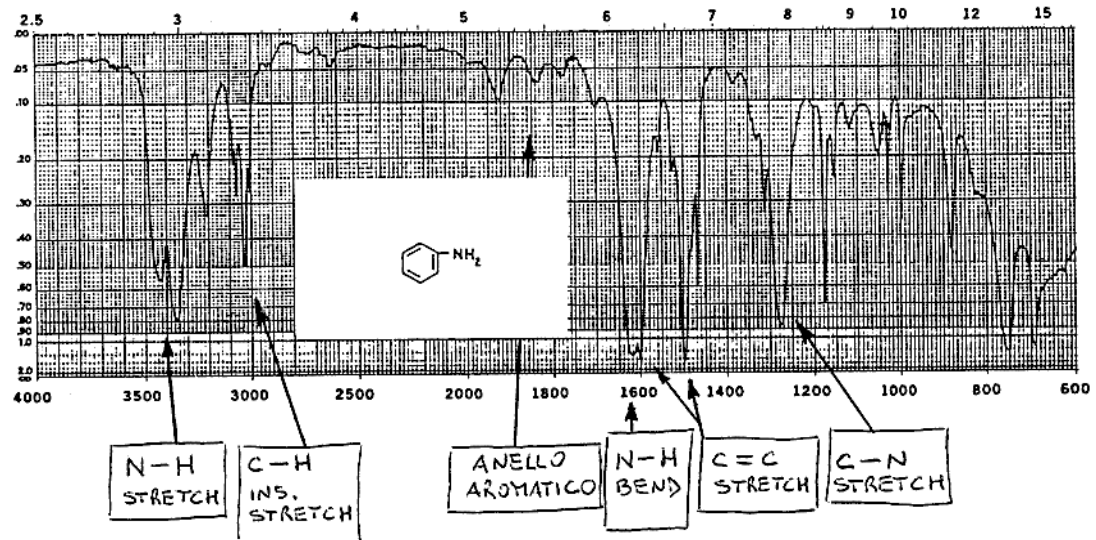
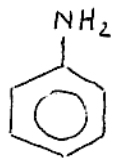


**AMMINE**

m-PROPIL AMMINE

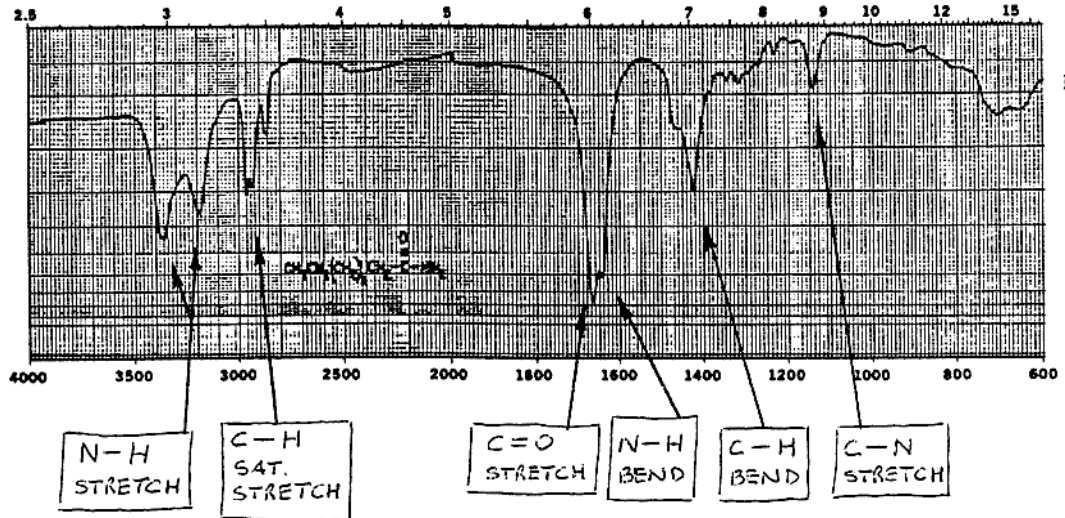
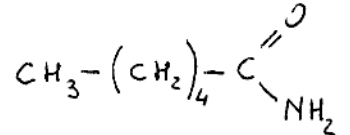


**ANILINA**

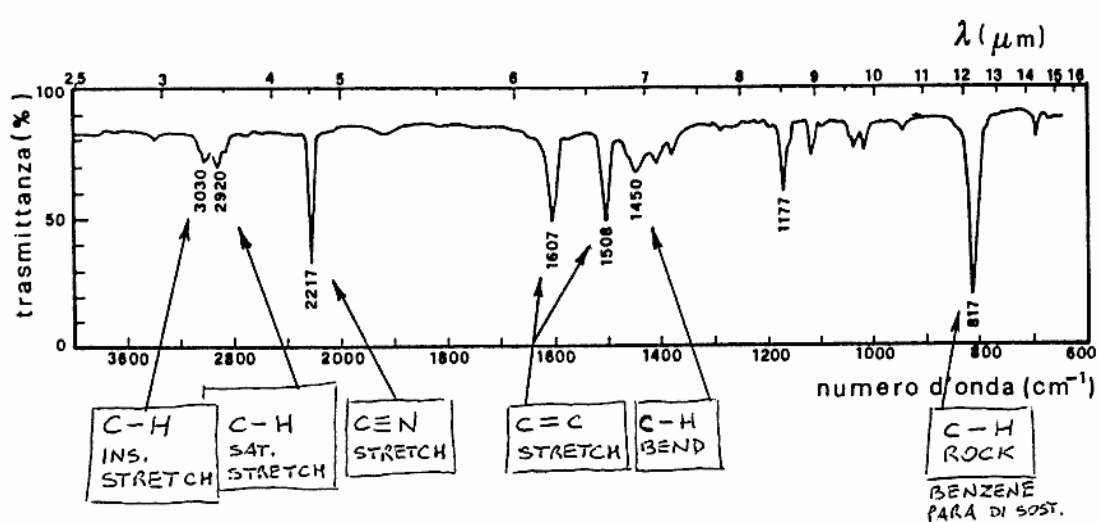


**AMMIDI**

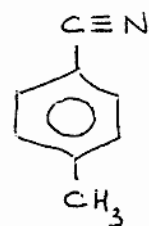
ESANAMMIDE



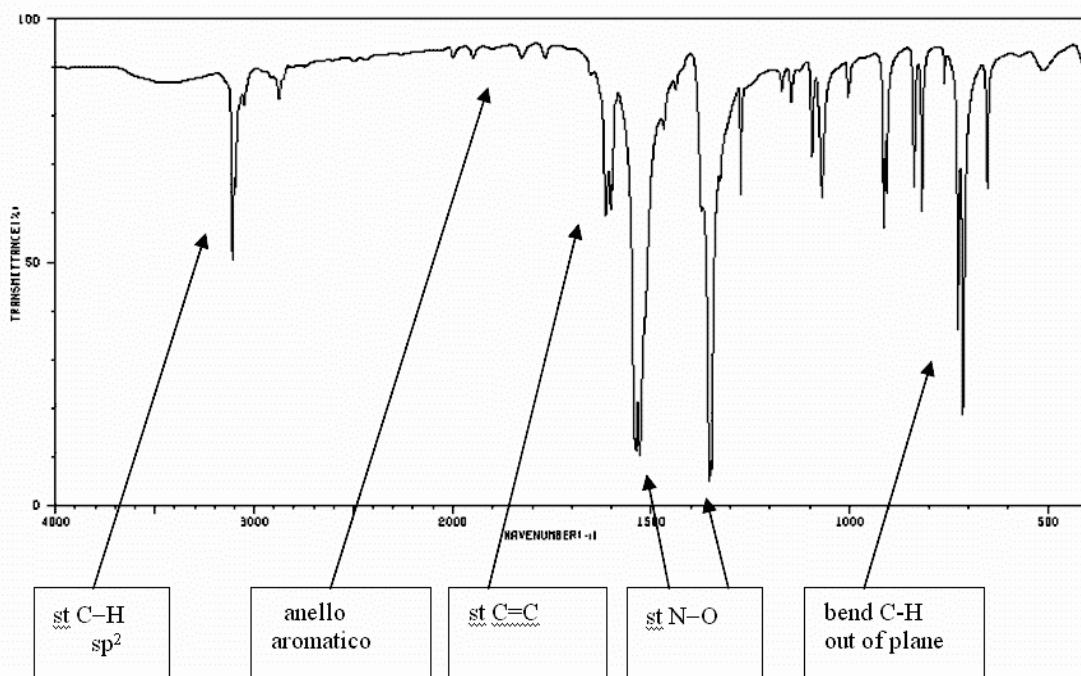
# NITRILI



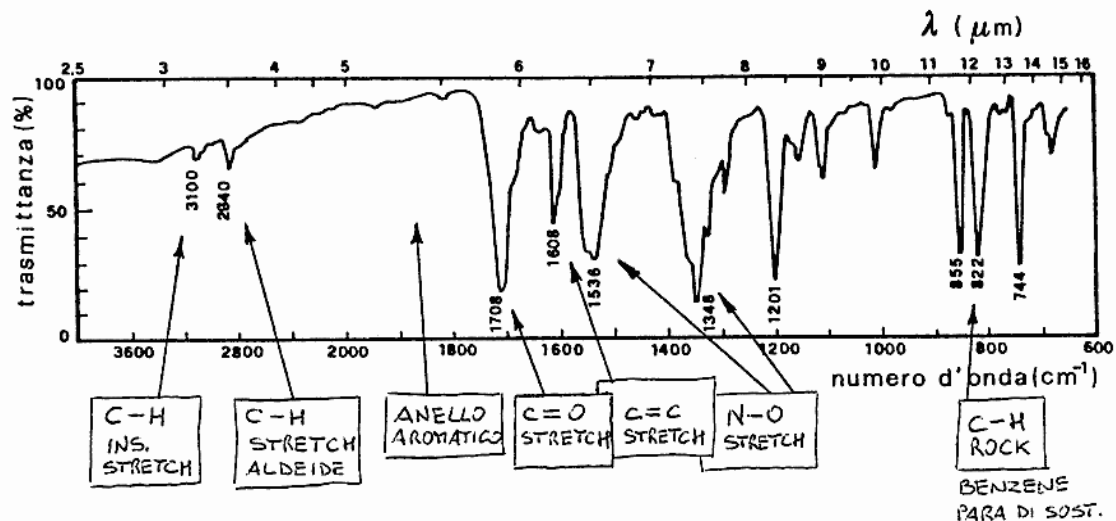
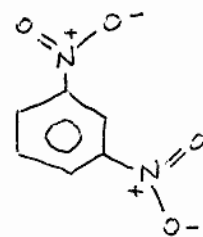
p-METIL  
BENZO NITRILE



# NITROCOMPOSTI



m-DINITRO  
BENZENE



p-NITRO  
BENZALDEIDE

