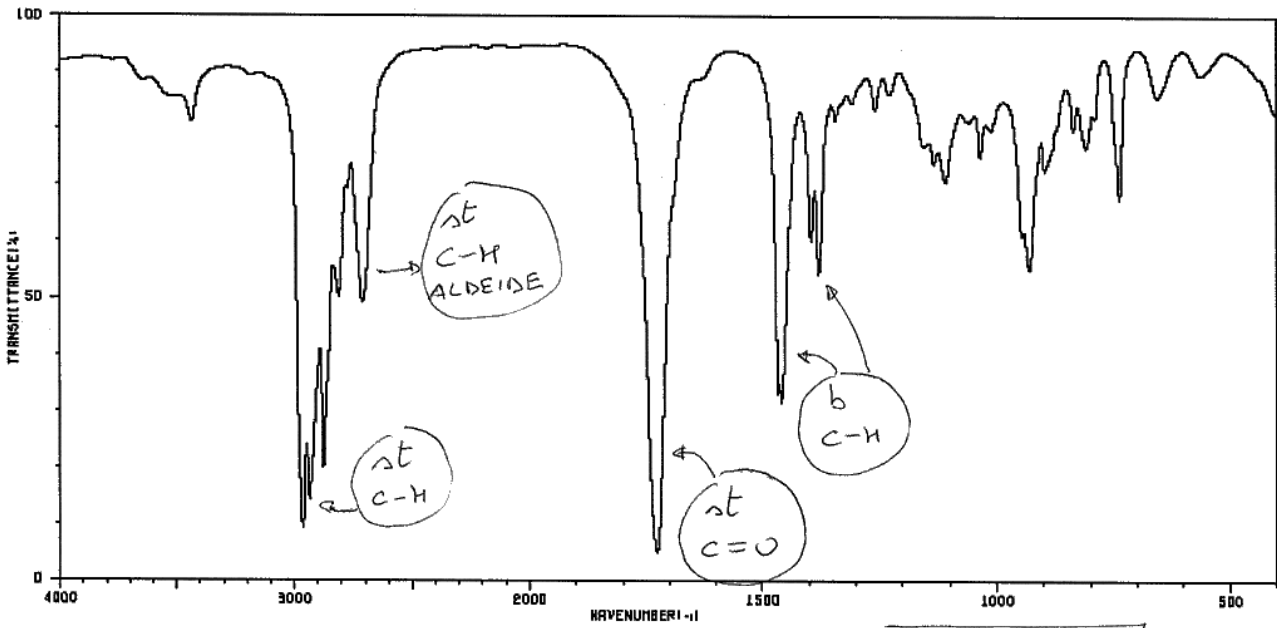
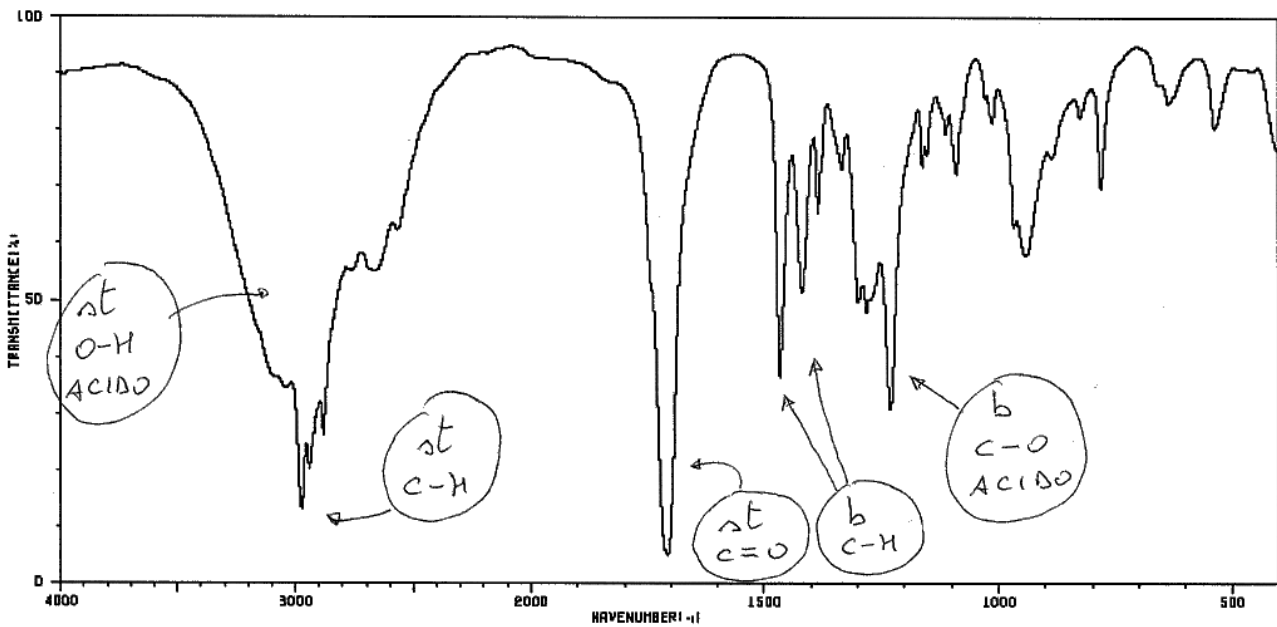
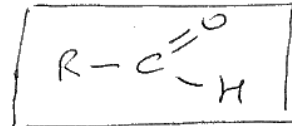


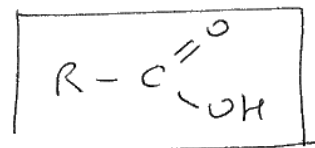
Identifica i composti dei seguenti due spettri IR, e attribuisce i picchi principali.



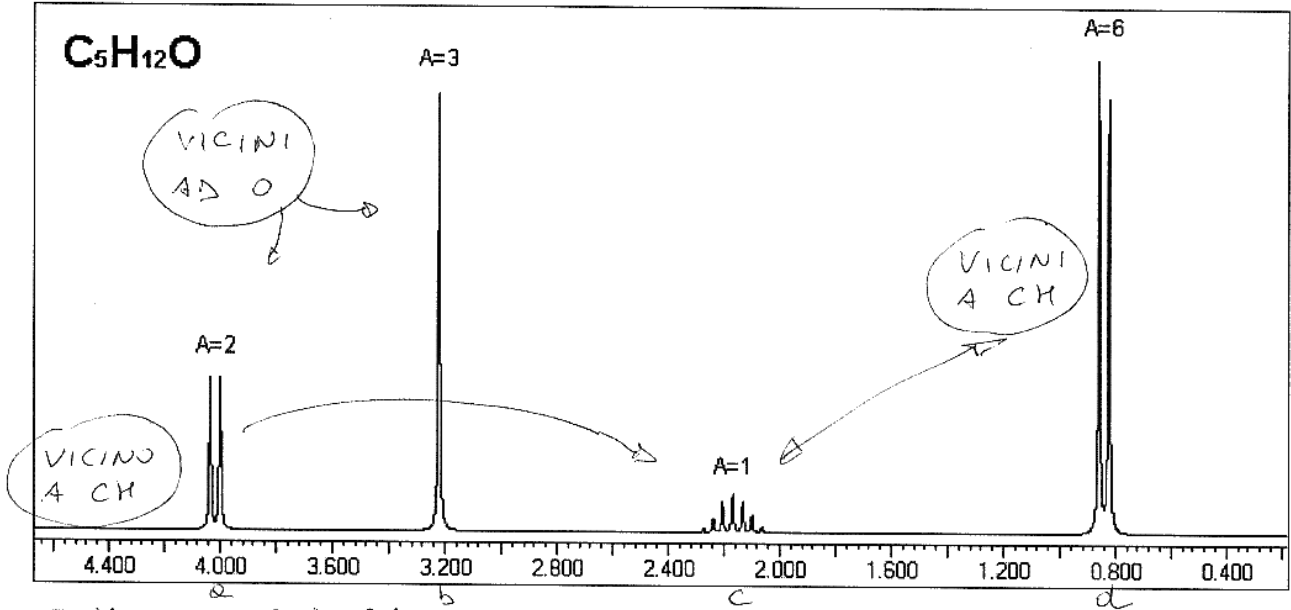
LA MOLECOLA È UNA ALDEIDE



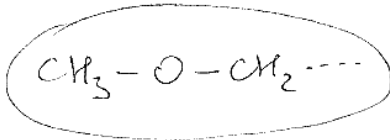
LA MOLECOLA È UN ACIDO



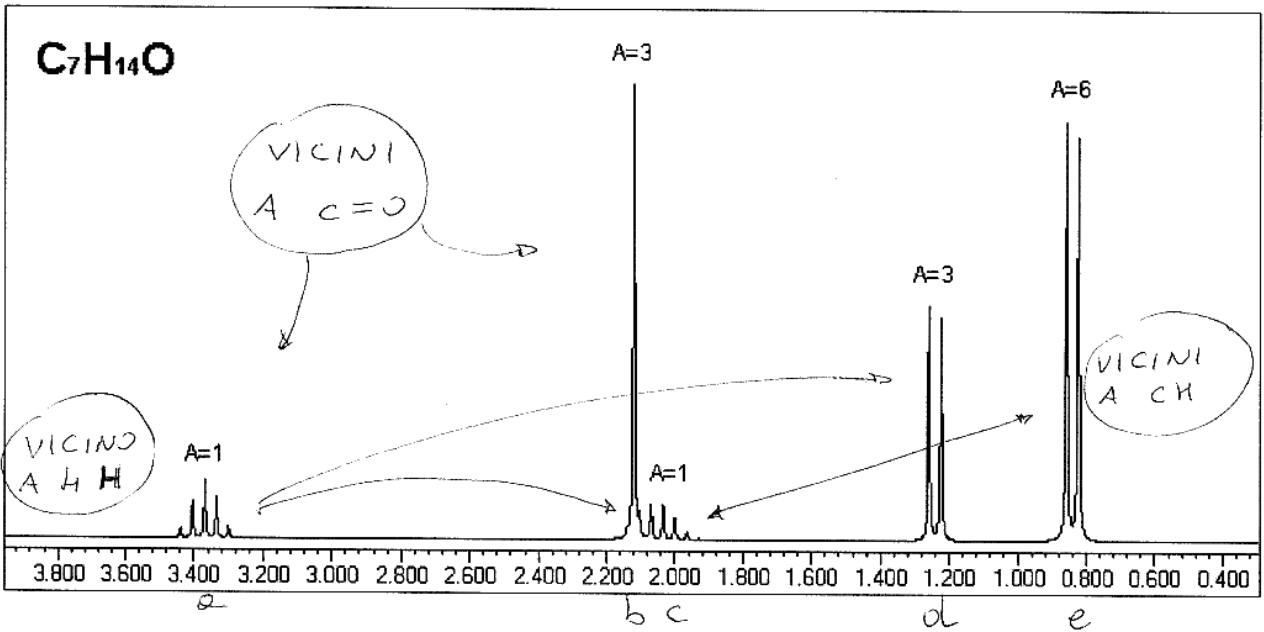
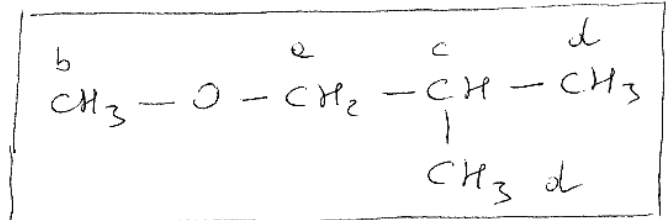
Identifica i composti dei seguenti due spettri NMR. Interpreta la formula bruta e attribuisce ogni segnale al corrispondente gruppo di atomi nella molecola identificandoli con lettere progressive a, b, c, ...



C₅H₁₂O → SATURATA



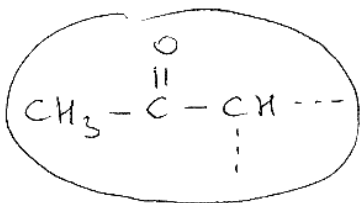
⇒



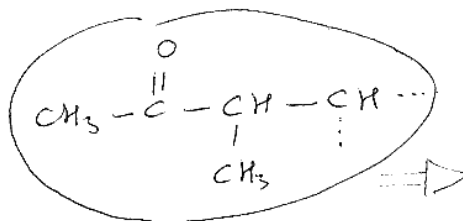
C₇H₁₄ → 1 INSATURAZIONE

CH, CH₃, CH, CH₃, CH₃+CH₃

6 C 14 7° E' C=O



⇒



⇒

